

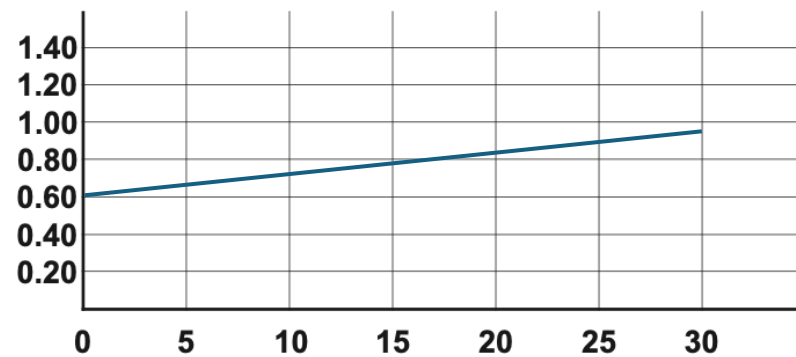
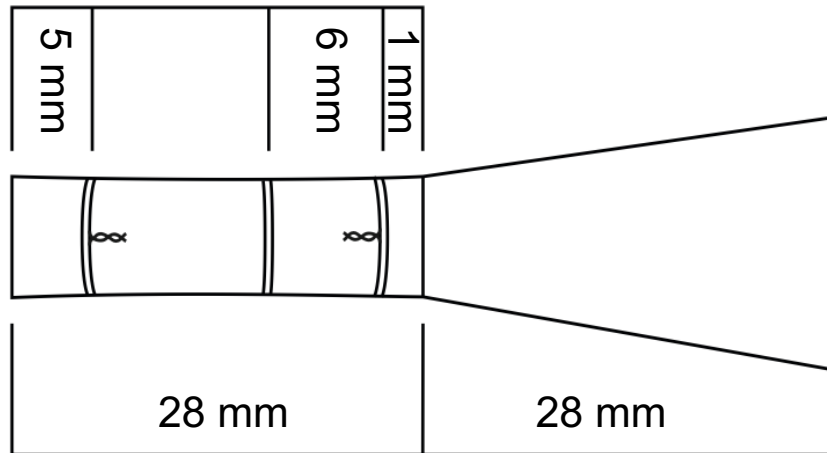


Rohr-Nr. Pierre Martens  
 Reed ID \_\_\_\_\_  
 Fassonform R2  
 Shaper Form \_\_\_\_\_  
 Schablone PM  
 Tip Template \_\_\_\_\_

Formdatum \_\_\_\_\_  
 Date Formed \_\_\_\_\_  
 Anspitzdatum \_\_\_\_\_  
 Date Scraped \_\_\_\_\_  
 Holzart Güner, Lavoro, Danzi  
 Cane Brand \_\_\_\_\_  
 Holzdurchmesser 23 – 24 mm  
 Cane Diameter \_\_\_\_\_  
 Innenhobeldicke 1.25 mm  
 Gouge Thickness \_\_\_\_\_  
 Innenhobelart      
 Gouge Style \_\_\_\_\_  
 Holzhärte 15 – 16  
 Cane Hardness \_\_\_\_\_  
 Schablonenposition 61.1 mm  
 Template Position \_\_\_\_\_



Profiler Settings

Notizen  
 Notes

Tip thickness set to 0.35 mm  
 Profiled, let rest for a week,  
 then tip profiled again before  
 playing